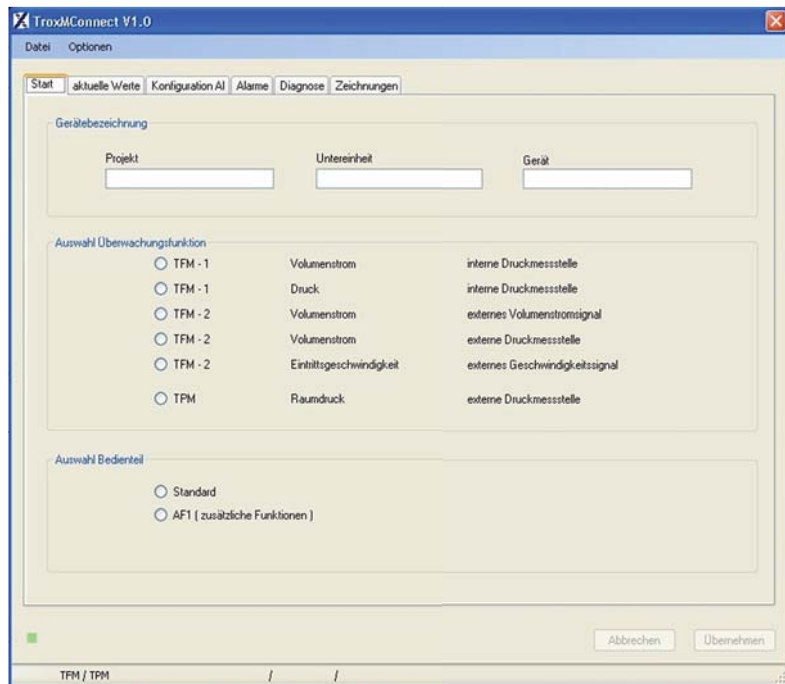


Configuration software MConnect



For the commissioning and diagnosis of TFM and TPM

Software for the configuration and diagnosis of monitoring systems TFM or TPM

- Display of the values being monitored
- Menu-based navigation
- Selection of values to be monitored and of alarms
- Configuration of additional functions
- Selection of dialogue language and of unit of measure for the volume flow rate

Type		Page
MConnect	General information	2.6 – 6
	Basic information and nomenclature	2.7 – 1

Description



MConnect configuration software

Application

- MConnect configuration software for use with monitoring devices TFM-1, TFM-2 and TPM
- PC software, available for download free of charge, to be used by customers
- Used for the configuration of monitoring devices for fume cupboards or rooms, monitoring of volume flow rate, face velocity, and differential pressure
- Functional testing and fault diagnosis
- Rapid documentation and creation of databases
- Upload/download and saving of data records

Useful additions

- MConnect-CAB: Plug-in cable for the connection of a monitoring device Type TFM or TPM to a computer

Special features

- Device configuration with graphical support
- Display of the operating values being monitored and of the actual values
- Monitoring of two independent values; the corresponding types of alarm can be set
- Special functions such as switch contacts for alarm suppression
- Creating backup files to build up a project database
- Selection of dialogue language, selection of unit of measure for volume flow rate

Parts and characteristics

- PC software
- Software communication via serial RS232 interface
- Graphical user interface (Windows-based)
- Based on the Microsoft.Net Framework (included in the software package)
- Different views, e.g. for monitoring, alarms, characteristics

System requirements

PC or notebook

- Windows XP with SP3
- Windows Vista, SP2 or higher
- Windows 7 32-bit version
- RS232 interface or USB interface with USB-RS232 adapter
- Screen resolution 1024 x 768

Licensing

- No licence required

Installation and commissioning

Prepare computer

- Download and install software
- Install driver for USB adapter, if necessary
- Start software and select communication port COMx
- Select dialogue language

Commissioning of the monitoring system

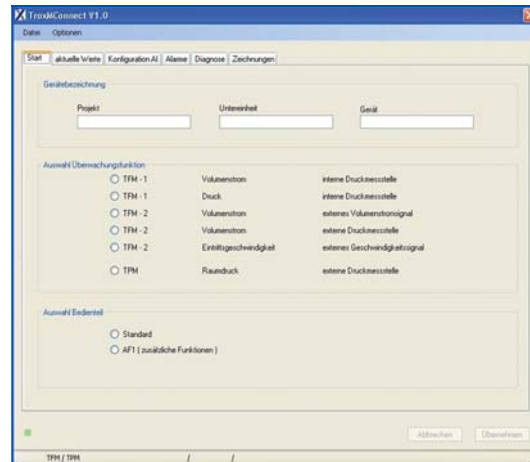
- Connect terminal cable
- Start software
- Open configuration or diagnosis window and carry out required actions

Function

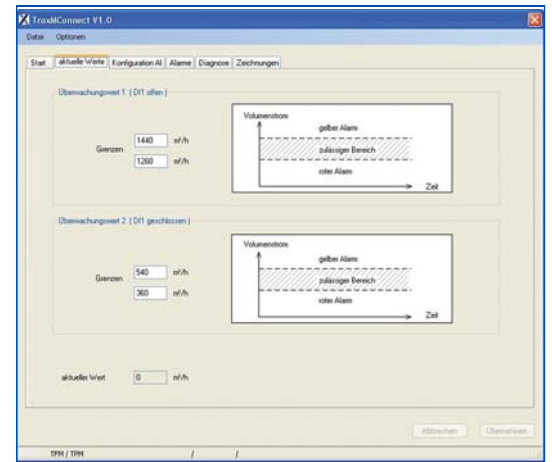
- The software displays values, parameters and functions on a graphical user interface (GUI).
- Diagnosis for all connections of the monitoring device
 - Dialogue language: English or German

- Unit of measure for volume flow rate: m³/h or l/s
- Device configuration is saved in files and can be used to create a project database

MConnect configuration software



MConnect configuration software



2

Order code

The MConnect software can be downloaded from our website free of charge.

Accessories for MConnect configuration software

MConnect – CAB

1

1 Accessories

MConnect-CAB Terminal cable for the connection of a monitoring system Type TFM or TPM to a computer

Air management control systems

Basic information and nomenclature

2



- Product selection

Air management control systems

Basic information and nomenclature

Product selection

	Control						Monitoring	
	System EASYLAB			System TCU-LON-II			TFM / TPM	
	Fume cupboard control	Room balancing	Room pressure control	Fume cupboard control	Room balancing	Room pressure control	TFM-1, TFM-2 Volume flow rate monitoring	TPM Room pressure monitoring
Area of application	Fume cupboard control	Room balancing	Room pressure control	Fume cupboard control	Room balancing	Room pressure control	TFM-1, TFM-2 Volume flow rate monitoring	TPM Room pressure monitoring
Hardware components								
Adapter module		●						
Expansion module for 230 V mains supply	Optional	Optional	Optional				Optional	
Expansion module for 230 V mains supply and UPS	Optional	Optional	Optional					
LonWorks interface	Optional	Optional	Optional	●	●	●		
Expansion module – solenoid valve	Optional	Optional	Optional	●	●	●		
Expansion module – fume cupboard lighting	Optional						●	
Control panel with 2-character display	●							
Control panel with 40-character display	●	●	●					
Control panel – TCU-LON-II standard				●			●	●
Control panel – expanded, AF-1							●	
Functions								
Monitoring – volume flow rate	●	●	●	●	●	●	●	
Monitoring – face velocity	●			●			Only with TFM-2	
Monitoring – sash position	●			●			●	
Monitoring – room pressure			●			●		●
Constant volume flow control	●	●		●	●			
Variable volume flow control	●	●		●	●			
Constant volume flow rate difference		●	●		●	●		
Room pressure control			●			●		
Room management function		●	●					
Additional functions								
Interface to central BMS	●	●	●	●	●	●	●	●
Damper blade position signal	●	●	●					
Diversity control		●	●		●	●		
Volume flow rate setpoint change		●	●		●	●		
Smoke extract	●							
Motion detector	●			●				
Control of automatic sash device	●						●	
Configuration software								
EasyConnect	●	●	●					
PlugIn TCU-LON II				●	●	●		
MConnect							●	●

● Possible

□ Not possible